



Real Estate
Brokerage
Representation
Consulting
Management
Development

FRIEDMAN
GROUP, LTD

AVAILABLE
314.367.2800



1,740 SF Studio Office Space for Lease in Soulard



2006 S. 8th Street
St. Louis, MO 63104

~~Lease Price \$14.25 per SF, MG~~
New First Year Price \$13.25 per SF, MG

- 1,740 SF Two Story Town-Style Studio in Six Year Old Newly Constructed Building
- Open 1st Floor with Kitchenette, Half Bath, Rear Patio, 10 Ft. Ceilings and Polished Concrete Floors
- 2nd Floor Has Open Floor Plan with a Full Bath and Storage Space
- Perfect as a Traditional Office or as a Loft Style Space
- Modern Contemporary Design and Finishes Thru-out
- One Assigned Parking Space in Gated and Fenced Rear Lot
- Space is Move-In Ready and Networked with Cat-5 and Alarm System

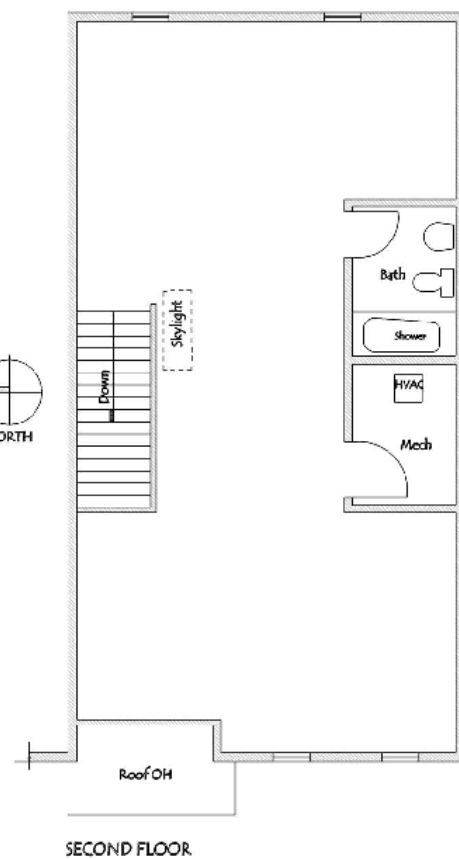
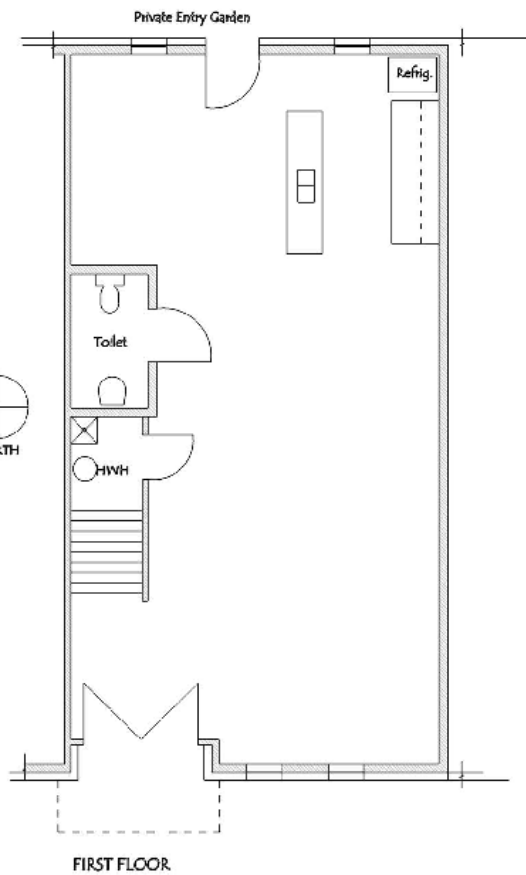
Information contained herein has been obtained from the owner of the property or from other sources and is subject to change without notice. The broker and owner do not guarantee the accuracy of this information. Owners and brokers make no representation as to the environmental or other conditions of the property and recommend that purchaser/tenant investigate fully.

For Information Contact

Richard H. Guth, CCIM, CPM, RPA
email: rick@friedmangroup.com
phone: 314.367.2800 Ext 22

Chris Bock
email: chrisb@friedmangroup.com
direct: 314.518.4027

Friedman Group, Ltd
245 Union Boulevard
St. Louis, Missouri 63108
web: www.friedmangroup.com
phone: 314.367.2800
fax: 314.367.3671



245 Union Boulevard
St. Louis, MO 63108
314.367.2800
www.friedmangroup.com

Information contained herein has been obtained from the owner of the property or from other sources and is subject to change without notice. The broker and owner do not guarantee the accuracy of this information. Owners and brokers make no representation as to the environmental or other conditions of the property and recommend that purchaser/tenant investigate fully.