



Real Estate
Brokerage
Representation
Consulting
Management
Development



314.367.4709

4709 Delmar Boulevard
St. Louis, Missouri 63108
web: www.brown-kortkamp.com
fax: 314.367.2140

**FRIEDMAN
GROUP, LTD**

314.367.2800

245 Union Boulevard
St. Louis, Missouri 63108
web: www.friedmangroup.com
fax: 314.367.3671

AVAILABLE FOR LEASE



4731 Delmar Boulevard-East of Kingshighway Lease \$8.95/s.f.
St. Louis, MO 63108 For half or entire floor
500– 10,000 Square Feet Available

- Individual Offices to Entire Floor—Share Office
- Additional Space Available
- Storage Space Available
- Free Fenced Parking
- Hub Zone
- Tax Credits may be available for this location.

For Information Contact

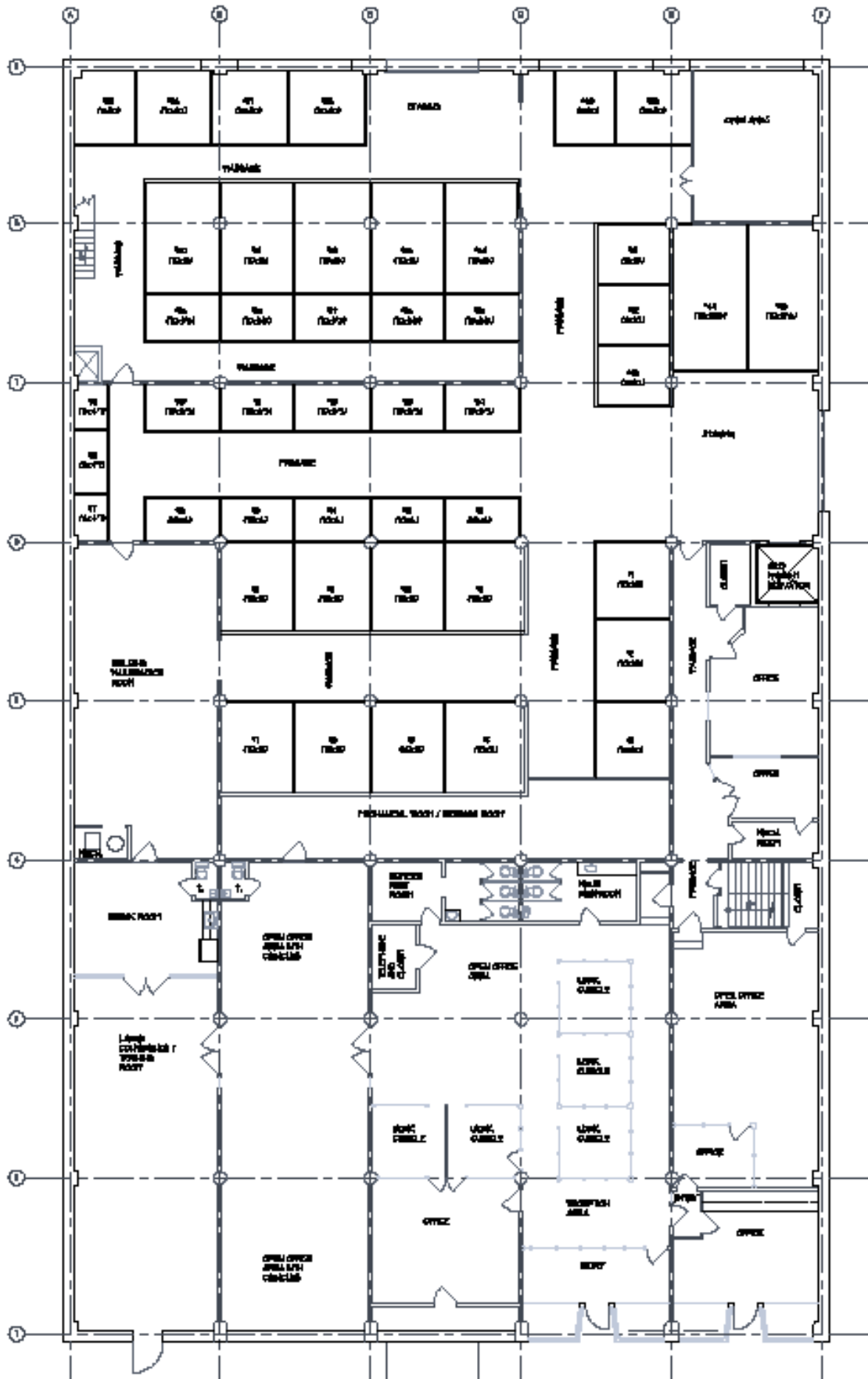
Gail Brown, CRB
email: gbrown@brown-kortkamp.com
phone: 314.367.4709/314.276.7515
fax: 314.367.2140

Eric Friedman
email: erics@friedmangroup.com
phone: 314.367.2800, Ext. 21
fax: 314.367.3671

Richard H. Guth, CCIM, CPM, RPA
email: rick@friedmangroup.com
phone: 314.367.2800 Ext 22
fax: 314.367.3671

Information contained herein has been obtained from the owner of the property or from other sources and is subject to change without notice. The broker and owner do not guarantee the accuracy of this information. Owners and brokers make no representation as to the environmental or other conditions of the property and recommend that purchaser/tenant investigate fully.

4731 Delmar— Floor Plan



4731 DELMAR FIRST FLOOR PLAN